

# SURFACING AND WALKWAY SLABS

made of recycled rubber

for terraces, balconies  
and flat roofs

**K** KRAIBURG  
RELASTEC

*KRAITEC<sup>®</sup> step*



 Made in  
Germany

comfortable · eye-pleasing · flexible

# Terraces and Balconies



## **KRAITEC**<sup>®</sup> *step*

**Balconies, terraces and gardens are recreational areas right on your property. When designed with an eye-pleasing appearance, they make rest and relaxation easy.**

KRAITEC step products are high-quality elastic surfacing slabs made from recycled rubber. They are comfortable to walk on, look great and provide outstanding surfacing on terraces and balconies as well as on walkways around houses and in gardens.

### **The advantages of KRAITEC step speak for themselves:**

- Simple non-glued installation with 4 integrated connector pins  
**Advantage:** the 30 mm thick slabs are securely bonded together, preventing displacement or buckling
- Individual slabs can be replaced at any time  
**Advantage:** replacing slabs is fast and easy with no mess
- Superb „Made in Germany“ quality, simple to care for  
**Advantage:** long life (even at below-freezing temperatures), easy to clean

- Eye-pleasing colours, can be combined as desired

**Advantage:** highly decorative, individualized surfacing fits in perfectly with surroundings

- Safe

**Advantage:** no danger of injury, can be walked on barefoot (no splintering as found on wood)

- Thermal insulation and noise deadening

**Advantage:** warm and quiet floors

- Slip-resistant and quick drying (e.g. after rainfall)

**Advantage:** safety for your children

- Environment-friendly

# Flat Roofs

## **KRAITEC<sup>®</sup> step**

**Flat roofs must allow access for maintenance, repair and cleaning work.**

KRAITEC step is a surfacing slab made from granulated rubber which provides outstanding protection on walkways over roofing membranes.

Installed directly on all types of waterproofing, KRAITEC step protects the roof system from damage.

Installation of KRAITEC step is fast and simple using the connector pins supplied. The surface can be walked on immediately after installation.

This dense and rugged rubber slab is also well suited for use in support pads under roof-mounted structures (antennas, air conditioning units, etc.)



# The Versatile Surfacing Slab

## **KRAITEC<sup>®</sup> step**

The coloured binding agents used to bond the granulated tyre materials in KRAITEC step provide a variety of colours which can be mixed and matched in eye-pleasing combinations. Drainage channels on the bottom side ensure secure removal of water. The slabs are easily installed over any paved level subsurface.

## **KRAITEC<sup>®</sup> step plus • step safe plus**

KRAITEC step plus and KRAITEC step safe plus incorporate geotextile laminate on their lower surface, permitting installation directly on PVC waterproofing. KRAITEC step safe plus has hammer-mark texturing on its upper surface for improved footing (certified R 10 anti-slip rating). Available in the standard colours grey, green, red and black, these rugged slabs are ideal for home and garden applications.



**red**



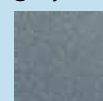
Art. 06189300

**green**



Art. 06189307

**gray**



Art. 06189318

**black**



Art. 06189319

# Let Your Creativity Run Free

**KRAITEC<sup>®</sup> step color**  
**KRAITEC<sup>®</sup> step neon\***

**With coloured EPDM surfaces.**

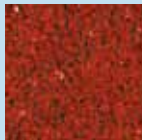
KRAITEC step color and KRAITEC step neon\* are made of the same high-quality rubber as KRAITEC step slabs and also have a decorative surface layer of 10 mm virgin EPDM rubber. A wide range of colours are available for selection and combination in accordance with your ideas and wishes, allowing you to create a personalized, unique ambiance on your balcony or terrace.

The virgin EPDM rubber surface of KRAITEC step color and KRAITEC step neon\* provides outstanding durability and UV resistance. It also has excellent chlorine resistance, making them ideal for use in walkways and edge surfacing around swimming pools.



**KRAITEC<sup>®</sup> step color**

**red**



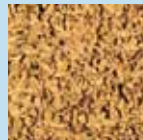
Art. 07189301

**green**



Art. 07189302

**yellow**



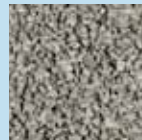
Art. 07189303

**blue**



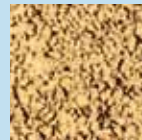
Art. 07189304

**gray**



Art. 07189305

**beige**



Art. 07189306

**KRAITEC<sup>®</sup> step neon\***

**luminous red**



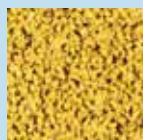
Art. 07189308

**luminous green**



Art. 07189307

**luminous yellow**



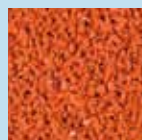
Art. 07189309

**luminous blue**



Art. 07189310

**luminous orange**



Art. 07189311

\* in luminous colours

# INSTALLATION INSTRUCTIONS

## 1. Installation

Be sure that the subsurface is compatible with the slabs (if not, insulate as described in Section 3 below). Start installation in a corner of the surface to be covered. Connect the slabs using the integrated connector pins mounted in the slabs as supplied. The pins, which allow rapid installation without need for time-consuming glueing, should point in the direction of installation.

Install the first row of slabs up to the edge limitation on the other side, checking to ensure proper alignment, perpendicularity and fit with the edge bordering. Installation is normally recommended in a masonry-type configuration, i.e. starting every second row with a half slab, in order to further stabilize placement.

## 2. Cutting

The slabs are easy to cut using a low-speed sabre saw (blade for wood with medium-sized teeth) or a carpet knife while using a steel straightedge as a guide. Be sure to support the slab with sufficient elevation on both sides of the cut.

## 3. Please note

When laying the slabs on plastic liners or waterproofing (e.g. on roof terraces), we recommend using a separation geotextile or equivalent material or using KRAITEC step plus which incorporates a laminated 300 g/m<sup>2</sup> PES geotextile mat on its bottom side.

Extreme temperatures:

Surfacing exposed to extreme temperatures will contract on cooling. This may result in gap formation at joints.



# GLUEING INSTRUCTIONS

To achieve improved placement stability of KRAITEC step, we recommend glueing together the slabs in the first and last rows unless the first and/or last row is bordered off by e.g. a brick wall. Glueing to the subsurface may also be advisable if possible.

## Required quantity of glue

1 cartridge (310 ml) for every 3-4 m of joint length glued.

## Type of glue

elastic 1-component polyurethane adhesive cement. e.g. Ottocoll P 83 or Ottocoll M 500 (available from Otto-Chemie, Fridolfing/Germany, Tel. +49-(0)8684-908-0)

## 1. Preparation

The surfaces joined must be clean, dry and free of grease. Check adhesion to and compatibility with plastic and painted surfaces before installation.

## 2. Glueing

Apply adhesive cement from application pistol onto the subsurface. The required layer thickness is dependent on the materials being joined. Within 10 minutes after application, place the slab and apply contact pressure. Due to the pasty consistency of the cement, we recommend maintaining contact pressure until curing is complete. The required curing time is dependent on the layer thickness and the humidity of the ambient air.

# TECHNICAL DATA

## 1. Application

KRAITEC step products are elastic surfacing slabs made from recycled rubber for terraces, balconies and flat roofs.

KRAITEC step safe plus is for use in areas with increased slipping hazards.

## 2. Material

Recycled tyre granulate and coloured EPDM rubber granulate (surface layer approx. 10 mm thick) bonded with polyurethane binding agent.

## 3. Product Characteristics

Available colour see pages 4 and 5  
Selection: (minor colour variations possible)  
Surface: smooth, open pores;  
hammer-mark texturing

Bottom side: smooth with drainage channels respectively polyester geotextile laminate 300 g/m<sup>2</sup>  
With: Plastic connector pins (4 per slab)

## 4. Dimensions/Tolerances

Length x width, thickness: 500 x 500 mm, 30 mm  
Tolerances: Length and width  $\pm 1.5\%$   
thickness  $\pm 1$  mm  
Weight: approx. 20.8 kg/m<sup>2</sup> or  
approx. 5.2 kg/slab

## 5. Product Properties

KRAITEC step surfacing and walkway slab 500 mm x 500 mm  
Weight: approx. 950 kg/pallet  
Packaging: one-way pallet 1.05 m x 1.10 m  
Quantity per pallet: 180 slabs



# RECOMMENDED CLEANING PROCEDURES

## General Information

Do not permit substances which can cause permanent stains – such as paints, lacquers, oils etc. – to contact or mark KRAITEC step surfaces.

## Routine Cleaning

To remove loose dust, dirt or other foreign material, use a soft-bristled broom or a heavy-duty vacuum cleaner. If the vacuum cleaner incorporates a mechanically driven brush, be sure that it is soft enough to avoid damaging the surface. To remove foreign material adhering to the surface such as dirt, moss, foods etc., scrub with a soft brush and water and rinse off with large amounts of water. Should residual material remain, scrub with a soft brush, warm water and highly diluted cleaning agent and again rinse off using large amounts of water.

High-pressure spray cleaners can also be used to clean KRAITEC step. Always maintain a minimum separation of 30 cm between the spray nozzle and the surface cleaned to reduce impact pressure and also ensure that the water temperature does not exceed 80°C. Following spray cleaning, remove all material washed out of the pores by washing with highly diluted cleaning agent and again rinsing with large amounts of water.

**KRAITEC<sup>®</sup>** *step*

**Gummiwerk KRAIBURG RELASTEC GmbH**

Fuchsberger Straße 4 · D - 29410 Salzwedel

**Sales**

Germany:

Telephone +49-(0)8683-701-167

Fax +49-(0)8683-701-4167

E-Mail [kraitec@kraiburg-relastec.de](mailto:kraitec@kraiburg-relastec.de)

Internet [www.kraiburg-relastec.de/kraitec](http://www.kraiburg-relastec.de/kraitec)

International:

Telephone +49-(0)8683-701-285

Fax +49-(0)8683-701-4285

E-Mail [kraitec@kraiburg-relastec.com](mailto:kraitec@kraiburg-relastec.com)

Internet [www.kraiburg-relastec.com/kraitec](http://www.kraiburg-relastec.com/kraitec)

